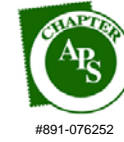


# Stamping Around

## Newsletter of the Mid-Cities Stamp Club

**Arlington Meetings:** First Wednesday @ 7:00 p.m.  
**Bob Duncan Center, 2800 S. Center St.**  
**Eules Meetings:** Third Wednesday @ 7:30 p.m.  
**12750 S. Pipeline Rd, #1C (Central Station Marketing)**  
**Lake Granbury Meetings:** 4th Tuesday @ 7:00 p.m.  
**Bentwater Activities Center (adjacent to Bentwater Marina)**



Volume 33, Number 1

<http://www.mid-citiesstampclub.com>

January 2020

Postage Rates & Fees	2019	1/26/2020
<b>DOMESTIC</b>		
<b>1st Class</b> - 1 oz (retail / metered or PC postage)	<b>0.55 / 0.50</b>	<b>0.55 /</b>
“ 2 oz	<b>0.70 / 0.65</b>	<b>0.70 /</b>
“ 3 oz	<b>0.85 / 0.80</b>	<b>0.85 /</b>
“ 3.5 oz (maximum)	<b>1.00 / 0.95</b>	<b>1.00 /</b>
non-machinable surcharge	<b>+0.15</b>	<b>+0.15</b>
<b>1st Class Flats</b> - 1 oz	<b>1.00</b>	<b>1.00</b>
“ 2 oz	<b>1.15</b>	<b>1.20</b>
“ 3 oz	<b>1.30</b>	<b>1.40</b>
“ 4 oz	<b>1.45</b>	<b>1.60</b>
“ 5 oz	<b>1.60</b>	<b>1.80</b>
“ 13 oz (maximum)	<b>2.80</b>	<b>3.40</b>
<i>(if rigid, non-rectangular, non-uniform, must be mailed as 1st Class Parcel)</i>		
<b>1st Class Package</b> - up to 4 oz	<b>3.66 - 4.06</b>	<b>3.80 - 4.20</b>
“ up to 8 oz	<b>4.39 - 4.81</b>	<b>4.60 - 5.00</b>
“ up to 12 oz	<b>5.19 - 5.66</b>	<b>5.30 - 5.75</b>
“ 13 oz (max for retail)	<b>5.71 - 6.27</b>	<b>5.90 - 6.50</b>
<i>(Commercial base pricing is considerably less)</i>		
<b>Media Mail</b> - 1 lb	<b>2.75</b>	<b>2.80</b>
“ 2 lbs	<b>3.27</b>	<b>3.33</b>
“ 3 lbs	<b>3.79</b>	<b>3.86</b>
<b>Priority Mail</b> - Flat-Rate /Legal/ Padded	<b>7.35/7.65/8.00</b>	<b>7.75/8.05/8.40</b>
“ - up to 1 lb.	<b>7.35 - 12.20</b>	<b>7.50 - 14.05</b>
“ - Small Flat-rate Box	<b>7.90</b>	<b>8.30</b>
“ - Med. /Lrg Flat-rate Box	<b>14.35 / 19.95</b>	<b>15.05 / 21.10</b>
<b>Postcard</b> (Domestic)	<b>0.35</b>	<b>0.35</b>
<b>Certificate of Mailing</b> (3817 / 3877 3pc min)	<b>1.45 / 0.41</b>	<b>1.50 / 0.43</b>
<b>Certified Mail</b>	<b>3.50</b>	<b>3.55</b>
<b>USPS Tracking</b>		
1st Class Parcel / Priority / Media / Parcel	<b>0.00</b>	<b>0.00</b>
<b>Insurance</b> (up to \$50 id free w/Priority Mail)		
0 - \$50 / \$50.01 - \$100 / \$100.01 - \$200	<b>2.20/2.80/3.50</b>	<b>2.25/2.85/3.55</b>
<b>Registered (Domestic)</b>		
\$0 value	<b>12.40</b>	<b>12.60</b>
\$0.01 - \$ 100 / \$100.01 - \$500	<b>12.95 / 14.95</b>	<b>13.20 / 15.25</b>
<b>INTERNATIONAL</b>		
<b>Letter &amp; Postcard Airmail</b>		
All Countries (1 oz) or Canada/Mex. (2 oz)	<b>1.15</b>	<b>1.20</b>
(variable pricing up to 3.5 oz)	see usps.com	See usps.com
<b>Non-machinable surcharge</b>	<b>+0.21</b>	<b>+0.21</b>
<b>First Class Pkg Int'l (1 to 8 oz)</b>	<b>10.50 - 14.50</b>	<b>12.25 - 15.25</b>
<b>Priority Mail Int'l Flat Rate Env(4 lbs) /</b>	<b>32.20 - 35.65</b>	<b>33.75 - 37.45</b>
“ Canada & Mexico (flat rate legal,padded)	<b>25.85</b>	<b>26.90</b>
<b>Priority Mail Int'l (1 pound)</b>	<b>41.80 - 43.10</b>	<b>44.50 - 45.35</b>
<b>Registered Mail</b>	<b>+16.00</b>	<b>+16.00</b>

## 2020 USPS Postage Rates

By Peter Elias

The last Sunday of each January is generally when the USPS changes its postage rates. This year, they will not change the basic 1-ounce 1st class rate (presently 55¢); the main reason being is that they were told that last year's rate increase from 50¢ to 55¢ wasn't justified to begin with.

But despite the foregoing, the USPS will pretty much raise all the other rates this year, including the International rates; the 1 ounce rate will go from \$1.15 to \$1.20.

Priority Mail & Express Mail (now known as Priority Mail Express) will also see increases. See the table to the left for more details on the mostly frequently used rates.

Please note that 1st class letter mail stops at 3.5 ounces (~ 100 grams); above that it is classified either as 1st class "flats" or 1st class "package" depending on the size & shape of the item.

"Commercial Rate" contract pricing is less than the "retail" rates that you and I pay.

The data shown is from the "final" USPS list as of December 10, 2019 and will take effect on January 26, 2020.

You can download the files with all rates, including the "Notice 123" from <http://pe.usps.com/pricechange/index>.

Article Index	Page #
<a href="#">USPS 2020 Postage Rate Increases</a>	1
<a href="#">Editor's Forum</a>	2
<a href="#">Calendar &amp; Secretary's Report</a>	2
<a href="#">Wineburgh Philatelic Library Christmas Party</a>	3
<a href="#">Comic - Blondie (Junk Mail)</a>	4
<a href="#">Member &amp; Dealer Ads</a>	4, 9, 10
<a href="#">MCSC Annual Christmas Party</a>	5
<a href="#">Club Meeting Minutes</a>	6, 7
<a href="#">Christmas Tree</a>	6
<a href="#">1st Rouletted Stamps</a>	6
<a href="#">Library Scott Catalogs</a>	6
<a href="#">2020 Membership Renewal Form</a>	7
<a href="#">From the President's Desk</a>	8
<a href="#">Been There - Done That (Big Bend)</a>	8
<a href="#">Comic - Shoe (Stamp Collectors Championship)</a>	9
<a href="#">Meet &amp; Eat Info</a>	10

# Stamping Around

## Newsletter of the Mid-Cities Stamp Club

Peter Elias, Editor ([news@mid-citiesstampclub.com](mailto:news@mid-citiesstampclub.com))

*Stamping Around* is published monthly by the Mid-Cities Stamp Club. Material in this [newsletter](#) may be reproduced in other philatelic publications if the source is acknowledged. Opinions expressed are those of the authors, and do not necessarily represent those of the Mid-Cities Stamp Club or its officers.

### 2019 - 2020 MID-CITIES OFFICERS & BOARD OF DIRECTORS

President – Richard Hildebrandt  
First Vice-President – Ray Moyer  
Second Vice-President – Gene Pfretzschner  
Secretary – Skip Ely  
Treasurer – Judy Christmas

#### Board of Directors (voting):

Peter Elias                      Alliene Franklin                      Ken Wills  
Immediate Past President: Ray Cartier

Membership in the Mid-Cities Stamp Club is available to anyone of good character interested in philately. Feel free to attend any of our 3 different meeting sites in the greater Dallas / Ft. Worth area! Dues are only \$12 per year (higher for mailed newsletters). For more information, the editor is reachable during business hours at (972) 671-0077 or : [editor@mid-citiesstampclub.com](mailto:editor@mid-citiesstampclub.com)

For a membership application write to:

**Mid-Cities Stamp Club**  
**P.O. Box 2158**  
**Arlington, TX 76004-2158**

or visit: <http://www.mid-citiesstampclub.com>

## Editor's Forum

By Peter Elias

Notice anything different in this newsletter (compared to previous ones)? I've decided to make a switch in the fonts that I use for article headings and the body of the article.

Rather than the mish-mash of different font styles that I used in the early 2000's ("hey, let's see how many different font styles I can use!"), I had transitioned to using blue underlined "[Arial](#)" font for the headings (generally in 14 point size) and black "**Times New Roman**" for the body of the paragraph (generally in 9 to 10 point size depending on the length of the article).

"**Times New Roman**" is a sort of a "typewriter" type of font, similar to "**Courier New**", the difference being that **Times New Roman** is proportional (equal spacing between each letter), while **Courier New** is non-proportional (each letter takes up exactly the same width, as in the old days, where there was exactly 80 characters across a sheet of paper, regardless of whether they were wide letters like "w" or "m", or narrow letters like "l" or "i").

When I read newspapers or magazines, I do pay some attention to the fonts being used. Generally speaking, it seems that many magazines use incredibly small fonts (down to 7 or 8 points) that require reading glasses no matter how good your vision is! At least I try to stay between 9 to 10 points - what you're reading now is 10 points.

It does break things up a bit to use a different font for the heading versus the body of the article, and I've decided to switch them. 10 point Arial is larger than 10 point Times New Roman, and bolder as well. I could also switch to "9 point Arial" if needed, that would be similar in size to what you've been reading before, and might allow for more text. I will of course adjust font sizes up or down slightly (in 0.1 point increments) to make sure that the article will fit.

Let me know what you think!

## Coming Attractions

### 2020

**JAN. 1** → **NO Meeting! It is moved to JAN. 8!**

**JAN. 8** **MCSC—ARLINGTON Meeting**

Program: Rob Hathaway: *"Is it possible to collect the entire world? My philatelic memoirs in 20 minutes."*

**JAN. 15** **MCSC—EULESS Meeting**

Program: Extended Show & Tell and philatelic discussions

**JAN. 18** **EXPO 2020 Planning Meeting 11 AM**

Location: David's BBQ in Pantego, 2224 W. Park Row

**JAN. 28** **MCSC—LAKE GRANBURY Meeting**

Program: TBD

**FEB. 5** **MCSC—ARLINGTON Meeting**

Program: Stan Christmas: *"Precancels"*

**FEB. 19** **MCSC—EULESS Meeting**

Program: Extended Show & Tell and philatelic discussions

**FEB. 25** **MCSC—LAKE GRANBURY Meeting**

Program: TBD

**MAR. 4** **MCSC—ARLINGTON Meeting**

Program: TBD

## Secretary's Report

By Skip Ely



### Applications for Membership & Reinstatement

Fred H. Ekenstam, Granbury, TX  
Raymond C. Mikeska, Jr., Salado, TX  
Roy Douglass, Fort Myers, FL

#### New Members

Richard R. Patterson, Hurst, TX (#621)  
Carl R. Huster, Hurst, TX (#622)  
Norman H. Pence, Hugo, OK (#623)  
Kenneth R. May, Lavon, TX (#624)

#### Reinstatements

Arthur P. von Reyn, Dallas, TX (#90)

### Membership Summary – December 6, 2019

Membership as of November 13, 2019	95
New Members	4
Reinstatements	1
Membership as of December 6, 2019	100

# Wineburgh Philatelic Library Christmas Party

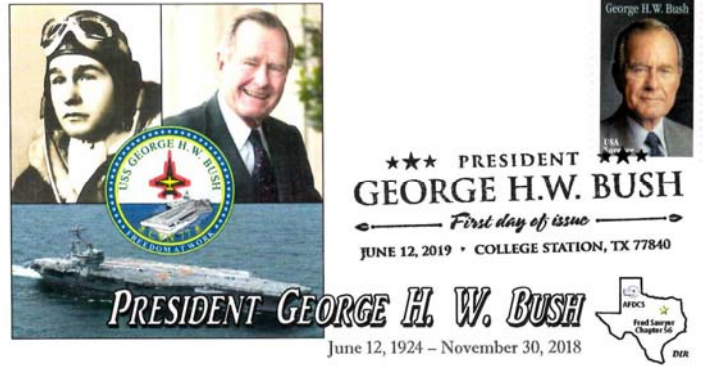
By Peter Elias

Approx. 40 - 50 people were presented at the December 14 Christmas party hosted by the Wineburgh Philatelic Library (which is located in the McDermott library on the grounds of UTD - University of Texas in Dallas, which is technically in Richardson).

A wonderful meal was catered by UTD Food Service staff and included salmon and a very yummy Beef Wellington! Desert included a "chocolate log" and cookies in the shape of envelopes and "flag stamps" (see photos).

All guests received some gifts as well, including a Wineburgh Philatelic Library coffee mug, a custom "PhotoStamp" and a 40x LED magnifying glass. McIntosh Cachets provided a cachet envelope with this year's Holiday Wreath stamp, and the Fred Sawyer chapter of the American First Day Cover Society handed out complimentary first day covers from the George H.W. Bush stamp that was issued earlier this year.

A group picture of all attendees was taken, however not received in time for publication. The group picture shown below was taken separately and is of attending members of the DPCPS (Dallas Park Cities Philatelic



Society). Shown left to right are Peter Elias, Tom Cunningham and Cathy, Paul



Withthoef, Geoffrey Owns (outgoing President of the DPCPS behind the sign); Josh & Lisa Tate (and their children Charlie & Ellie Tate) and Cathy & Stan Bartnikowski (incoming DPCPS president). Although I'm a member of the DPCPS, I haven't had the chance to attend a single meeting in 2019.



**stampsuniversal.com**

Visit us at area Stamp Shows



- \* TSDA
- \* TEXPEX
- \* HOUPEX
- \* EXPO

US/WW Classics, Modern, SONS

Visit our new online store

@ <http://www.stampsuniversal.com>

James D. Myers  
 P. O. Box 2047  
 Coppell, TX 75019  
 (972) 304-1671



Exp. 12/19

[Comic Strip - Blondie \(Junk Mail\)](#)

By Peter Elias



Here's another Blondie comic strip that mentions junk; it was published on December 7, 2019 in the Dallas Morning News.

The mailman apologizes to Dagwood that all he has for him is "junk mail", and is very surprised that the response is "no problem". Why is that? I suppose that most people only get advertising mail these days and aren't expecting much personal mail, which is few and far between and mostly limited to birthday, Get-Well, Christmas or other special holiday cards. And of course as a result, less stamps on inbound mail (the occasional definitive not withstanding).

It is a sad commentary on the times. At least I still write an occasional mailed letter to a relative in Europe that has no computer or "device" and handwrites their letters to me (albeit I use a word processor for my replies).



Be sure to visit the Club website on the **Internet:**

← <http://www.mid-citiesstampclub.com>

For online newsletters see

or <http://mid-citiesstampclub.webs.com/newsletter.htm> →



Specializing in United States Stamps  
Member APS, ASDA, NSDA

Kirk McKenzie  
[kirkmckenzie@cox.net](mailto:kirkmckenzie@cox.net)

1001 North Fulton  
Tulsa, Oklahoma 74115  
918-836-1681

Exp. 12/20

[cunninghamstamps@aol.com](mailto:cunninghamstamps@aol.com)

(214) 546-1179

*Cunningham Philatelics*

Philatelic Consultants

Elusive Items  
Stamps and Covers

Collections  
Appraisals

THOMAS L. CUNNINGHAM  
APS # 082424, TSDA

P.O. Box 863237  
Plano, TX 75086-3237

Exp. 12/20

**GEORGE WATKINS  
STAMPS**

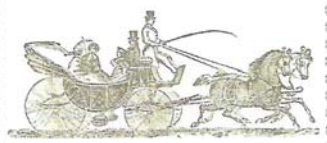
Philatelic Dealer - Worldwide & Latin America  
14810 Tuttle Lane  
Iola, Texas 77861-3834  
(936) 394-2146 Fax (936) 394-2147  
[gwkilker@aol.com](mailto:gwkilker@aol.com)

George H. Watkins, Jr.  
Proprietor



Exp. 12/20

Estate Appraisals



Topper Stamps & Postal History

[jonathan@topperstamps.com](mailto:jonathan@topperstamps.com)

[www.topperstamps.com](http://www.topperstamps.com)

Jonathan Topper  
10480 Grant Road  
Suite 117  
Houston, TX 77070  
832.518.6558

Exp. 12/20



## Annual Club Christmas Party

By Judy Christmas



If you missed the Annual Mid-Cities Stamp Club Christmas Party this year, you missed a fun time. The party was held on December 4<sup>th</sup>, at the *Bob Duncan Community Center*. There were 28 members and their guests present.

Boston Market again catered this year. They bring the food to us, set everything up and provide plates, plastic silverware and serving utensils. We had turkey, mashed potatoes, gravy, sweet potato casserole, corn and cornbread. Many members brought salads, beans, green beans, the best corn casserole ever and other side dishes. And there were many pies and other goodies to finish off the meal.

After a brief meeting where **Peter Elias** was recognized with two awards for his exhibits on "*Introduction to Spanish Thermal ATM Stamps*" (MCSC "Best Foreign Material" and MCSC "Best Exhibit By A Member"), **Ray Cartier** said grace. The ladies then led the line for the food.

After tummies were full, we began a new hopefully tradition for exchanging gifts. Shanghai Bingo has been put to rest after some thirty or forty years. The Board of Directors decided that it was time for a new exchange of giving presents.

As members came in and put a gift on the gift table, **Stanley Christmas** handed them a ticket. When Stan called the first number, the person holding that ticket went up to the gift table and choose a gift. They then opened it so everyone could see what they got and went back to their seat. Then a second number was called. That person could either take what the first person got or pick a new gift. They would open their gift and then sit down. A gift could only be taken twice, then it was frozen. We continued doing this until all numbers had been called. At this point the person who had the first number was then allowed to take a gift from someone if they so choose. This seemed to go very smoothly and there were some really nice gifts, two of which were \$10 gift certificates. I asked for a show of hands to see how many enjoyed this new take on the bingo games. Many hands were raised so we will do this again next year!

I would like to say a special thanks again to **Bert Hildebrandt** and his lovely wife **Bert** for again providing all the festive decorations for the tables. They always make the room come alive with the feeling of Christmas in the air. We hope to see more of you at next year's Christmas Party!

**Merry Christmas  
&  
Happy New Year to Everyone!!**

Christmas party photos by Peter Elias —>



## Arlington Meeting Minutes December 1, 2019

By Skip Ely

### Attendance:

- 25 members and 4 guests were present for the 2019 edition of the club Christmas party.

### Program:

- Ray Cartier did the invocation about 6:30 P.M. The Christmas dinner was catered by Boston Market, with several side dishes and desserts provided by members.

### Gift Exchange:

- The long time playing of Shanghai Bingo was replaced by a modified gift exchange. Members and guests chose from gifts at the front table or from gifts previously selected by other members.

### Announcements:

- Peter Elias outlined some of the changes to the club's YahooGroup site and said he will be sending out invitations to join a new one that will provide access to all previous club newsletters.

### Adjournment:

- The meeting adjourned about 8:30 PM.

## Christmas Tree

By Ken Aldridge



The earliest known reference to a decorated tree was in the diary of a traveler to Strasbourg in 1605, but other accounts suggest that the custom may have originated much earlier.

Martin Luther is credited by many with bringing the Christmas tree into the house. It is said that on a walk through the forest, the leader of the Reformation was awed by the stars; their light shining through the evergreen reminded him of Christ, "who for us men and our salvation came down from heaven". When he returned home Luther set up a fir tree indoors, lighting it with candles to represent those stars and their heavenly message.

As a 'Christian symbol', the tree, which is an evergreen, represents Christ who is ever living and eternally the same. The tree with its lights and gay colors becomes a symbol of Christ as the Tree of Life.

## First Rouletted Postage Stamps

By Ken Aldridge



The stamps pictured, Prussia Scott catalog #14 to #20, were issued 1861-1865 by the Prussian Postal Authorities. I read somewhere that these were the first postage stamps issued anywhere in the world to have rouletted perforations.

tions.

This set is also embossed and the perforations are listed as "11½." The rouletting process cuts little slits into the paper between the stamps with alternate spaces left uncut. The term comes from the French word, "Roulette," which was a spur-like wheel.

Other countries soon took up the rouletting process, many in the late 1880's. Wurttemberg and Thurn & Taxis in 1865, Argentina in 1877, Chile and Bolivia in 1877 and even the U.S. in their "Proprietary Revenue," series of 1898.

In more recent issues, the U.S. Postal Service used rouletted perforations for #2526 (29¢ Flower) and #2829 (32¢ red G).

Many Cinderella stamps can also be found with this perforation process.

## Library Scott Catalogs

By Peter Elias

I usually tell people that they should go to their local library and check out a Scott catalog if they want to get an idea of what their collection is "worth" (at least in terms of retail buying prices).

When I was at the Richardson public library the other day, I noted that they had 4 copies of the Scott USA Specialized, 1 in reference and 3 for check-out; too bad that the newest one for check-out was the 2014 edition (see screen shot below).

For Scott volumes 1 to 6, the newest for check-out was from 2014; plus a set from 2013 and a reference set for 2015.

I'm wondering why they don't have anything newer. Is it because the catalogs are now so fairly expensive? How much do libraries pay for their copies, and how do they get funding for the purchases? I suppose that if demand is fairly low, they're not going to commit many hundreds of \$\$ to buy these.

Scott specialized catalogue of United States stamps.					
New York : Scott Publishing Co., 1973- 1973-					
Subjects:	<ul style="list-style-type: none"> <li>• Postage stamps -- United States -- Catalogs.</li> <li>• Postage-stamps -- Catalogs.</li> </ul>				
Description:	v. : ill. ; 24 cm.				
Edition:	2005				
Summary:	Also includes: Confederate States--Carri Zone--Danish West Indies--Guam--Hawaii--United Nations. United States administration. C				
Availability:	2				
Number of Requests:	0				
Copy/Holding information					
Location	Collection	Call No.	Copy	Status	
Richardson Public Library	Adult Nonfiction - 3rd Floor	769.569 SCD	2011	Checked In	
Richardson Public Library	Adult Nonfiction - 3rd Floor	769.569 SCD	2013	Checked In	
Richardson Public Library	Adult Nonfiction - 3rd Floor	769.569 SCD	2014	Checked out	
Richardson Public Library	Reference - Basement	769.569 SCD	2015	Reference	

## Granbury Meeting Minutes November 26, 2019

By Eugene Atkinson

Host David Stockbridge greeted 12 members to the November 26 meeting of the Lake Granbury Branch, Mid-Cities Stamp Club.

The group meets in the Bentwater Activities Center, 1800 West Emerald Bend Court in Granbury on the 4th Tuesday of each month (except December).

In the portion of the meeting devoted to **SHOW &**

### **TELL:**

- New members Fred and Linda Ekenstam unveiled his book on local and postmaster cancellations in Texas between 1857 and 1911.
- Jim Myers reminded all about the table containing a variety of free publications.
- Denny Ludlow also had some free books, philatelic covers, and a WWII ration book for Alliene Franklin, who is departing Granbury for Lufkin early in the new year.

David Stockbridge reported that the club had rented the Bentwater Center for next year at the old rate of \$50. And Jim Case, Julie Rimmer, and Justin Rimmer shared their recollections of the recent EXPO.

For **WHERE IS IT**, Gary McNamee described a country that released its first stamps in 1938 and often featured polar bears. Jim Myers quickly identified Greenland.

David Stockbridge noted that the calendar for 2020 is ready and he asked members to volunteer programs for the eleven meetings. At least one program will consist of an American Philatelic Society DVD subject.

Following a brief break, Stockbridge delivered the **PROGRAM**. Appropriate to the season, he showed the development of the Christkindl postal markings from far western Austria. First used in 1950 the "Christ Child" postmark recalled a Christmas miracle. Each year since, the number of covers serviced has increased from a few thousand to more than three million. The cancellation itself has evolved from the manger scene to the local church and music of "Silent Night." Beginning in 1968 two cancels have been used to signify the first and the last day of the season, running from November into January.

**CLOSING:** Wrapping up the 2019 calendar year for Lake Granbury, gift certificate door prizes went to Justin Rimmer, Linda Ekenstam, Julie Rimmer, and Gene Atkinson.

## 2020 Mid-Cities Stamp Club Membership Renewal

# \_\_\_\_\_

Mr. Mrs. Ms. Miss Name: \_\_\_\_\_ Date of Birth: \_\_\_\_/\_\_\_\_/\_\_\_\_  
(First) (M.I.) (Last) (Complete if under 18)

**Check here if information is unchanged from 2019 and skip to signature line below.**

Home Address: \_\_\_\_\_ City \_\_\_\_\_ State \_\_\_\_\_ Zip \_\_\_\_\_ - \_\_\_\_\_

Email: \_\_\_\_\_ Home Phone: \_\_\_\_\_ Mobile: \_\_\_\_\_

Collecting Interests: \_\_\_\_\_

Other Stamp Organizations with membership numbers (if applicable): \_\_\_\_\_

APS # \_\_\_\_\_ ATA # \_\_\_\_\_ TPA # \_\_\_\_\_ Other: \_\_\_\_\_

Permission is granted to make the information above available to other club members. Indicate anything you do NOT want shared: \_\_\_\_\_

**Signature:** \_\_\_\_\_ Date: \_\_\_\_/\_\_\_\_/\_\_\_\_

### **Membership Level:**

\_\_\_\_ \$12 Regular Adult (emailed or online newsletter)

\_\_\_\_ \$22 Regular Adult (with mailed newsletters)

\_\_\_\_ **\$25 Sponsor Membership**

\_\_\_\_ \$35 Sponsor (with mailed newsletters)

\_\_\_\_ \$6 Additional Adult (only 1 newsletter copy)

\_\_\_\_ \$4 Youth (under 18; add \$10 if printed newsletter is desired.)

**Make check out to 'Mid-Cities Stamp Club' and mail this form with payment to:**

**Skip Ely, MCSC Secretary, 5512 Shady Meadow, N. Richland Hills, TX 76180-6616**

## From The President's Desk

by Richard Hildebrandt

I was requested by Peter to compose this message earlier in the month than usual as things get very busy for all of us as Christmas nears. I assume that you will get the newsletter prior to that date so let me wish all of you and your families a Merry Christmas. As I complete my first year as your president, I am not sure if I should look forward or backward at this time, so I will do a little of each.

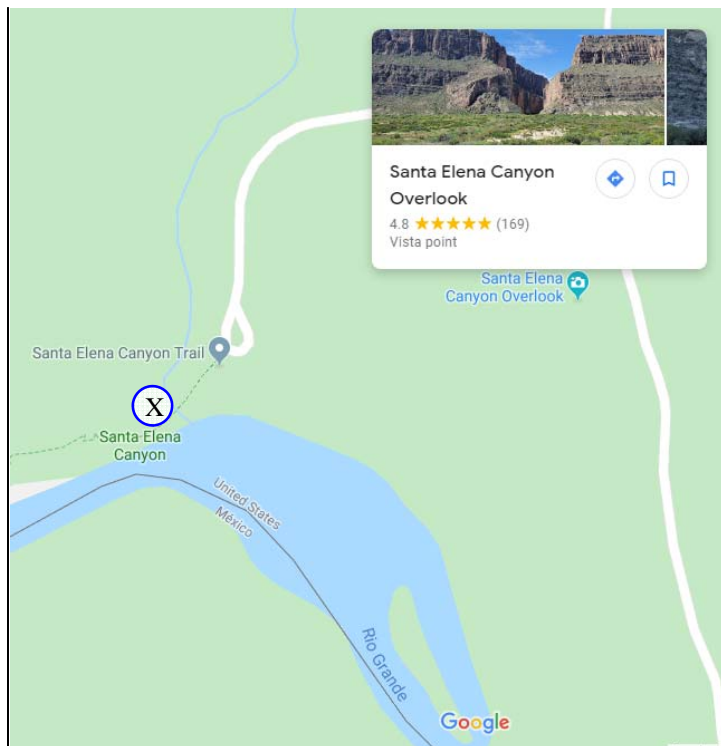
First, I want to give a very big thank you to Stan and Judy for all of their efforts in setting up and running the last meeting (the Christmas Party). Along those lines, thank you to all who participated and brought the wonderful dishes that accompanied the main entrees. If you were not able to attend, you missed a fine meal and an interesting gift program.

Another thank you goes to all of the people who presented a program at our meetings. I feel that the programs are the focal point of the meeting and allow all of us to increase our knowledge and see other aspects of philately.

Looking ahead, we have a good start on programs for the Arlington meeting. We are always in search of folks who are willing to share some of their knowledge with other club members and I encourage all of you to consider presenting a program at any one of our monthly meetings. It is you the members who make the club what it is.

Just a reminder that the Arlington January meeting will be on the second Wednesday, January 8 (as the Bob Duncan Community Center will be closed on January 1). Hope to see many of you there as we begin what should be another outstanding year for our club.

Finally I wish for all of you a Happy and Healthy New Year.



stone cliffs of Santa Elena Canyon. We basically saw that same view, albeit not as dramatic as on the stamp, as the picture below was taken during the middle of the day, not the best time for dramatic lighting. The picture was taken approximately where "X" is in the Google Map screen shot above, facing southwest into the canyon.

It was definitely a great trip, of which Big Bend was just a part. We also got to see Marfa (and even tried to see the famous "lights" there at night at the special viewing area), Alpine, Fort Davis National Historic Site, the McDonald Observatory, walked through a slot canyon ("Tuff Canyon" if I remember correctly), visited a ghost town and a few other things. All crammed into one week with lots of driving!



*Been There,  
Done That*

## Big Bend National Park

By Peter Elias



There is only one National Park in Texas, and it is Big Bend, located about 556 miles from where I live; a whopping 8 hour 17 minute drive according to [Google Maps](#).

During Spring Break in 2012, Annie, Marcos & I drove there as part of a weeklong trip.

The \$7.75 Priority Mail stamp shown above will be issued on January 18, 2020. I figured that I would get a head start in a "Been There - Done That" article by writing it before the stamp is issued!

According to the USPS, the illustration on the stamp features the Rio Grande flowing between the lime-



# CLASSIFIED BOURSE

## Announcements

All club members that are current with their dues payments are entitled to FREE ads in this space! Please send ad to: Peter Elias, P.O. Box 940427, Plano, TX 75094-0427, give it to me at a meeting, or e-mail me at: [peter@pcelias.com](mailto:peter@pcelias.com)

## For Sale

**US POSTAGE – from our huge surplus: 1c – 20c : 70% of FV; 21c – 50c : 80% of FV.** Send any amount (min \$10), specify group (70%, 80%), and receive mix of values back in FV as indicated above. Clean, F/VF only. Plate or Zip block included for every \$10 remitted. Remit (check or MO) to: J. Myers, P. O. Box 2047, Coppell, TX 75019. TX orders, add 8% sales tax. We cover return postage, S/H charges. Can also take PayPal (same terms). [jasdmyers@earthlink.net](mailto:jasdmyers@earthlink.net) 5/15

**Recalled Legends of the West** (Scott 2870), pane of twenty inside original mailing envelope, Scott 2017 value \$125 with note that panes in original envelope (blue bordered) "sell for somewhat more." I will sell for \$80 plus any mailing costs. Ken Aldridge, [KAldridge@aol.com](mailto:KAldridge@aol.com) 12/18

## Wanted to Trade

I have general (unsorted) worldwide & used USA stamps (mostly beginning collector material) available to trade for your items such as worldwide revenue stamps & Framas. Contact Peter Elias at [peter@pcelias.com](mailto:peter@pcelias.com) 9/16

## Wanted

**Postally used "ATM" stamps** (i.e.: machine vended), such as Framas, from around the world; would prefer on cover or postcard if possible. Peter Elias, [info@stvincentstamps.com](mailto:info@stvincentstamps.com) 8/14

## For Sale

I now have a new website in which I have listed all my used **duplicates (many thousands)**. They are arranged in Scott number sequence within country. Do take a look, and select any that you want. I charge 1/3 catalogue value, post paid. The URL is [www.kenwills.net](http://www.kenwills.net) Contact me at [wills@airmail.net](mailto:wills@airmail.net). Happy hunting! 3/19

**Philatelic Reference CD's.** The following self-running, philatelic reference CD's, each containing hundreds of scans, are now available:

- **APC Conversions 2012-2014 (NY2016 Vermeil Award!)**
- **Usage of British Empire War Tax Issues** (exhibit)
- **Airport Philately** (800+ scans of Airports on Stamps)
- **4 Rings—The History of Audi (Great for any car lover!)**
- **My Life on Wheels** (autobiography via USA personalized postage)
- **St. Vincent Philatelic Reference Scans (1,700 items!!)**
- **St. Vincent Postcards** (300+ postcards from 1900 to 2007)
- **Vintage Swiss Postcards 1898-1959 (900+ postcards !!)**

Special MCSC Member price is only \$ 9.95 each. Non-member price is \$19.95 (+ \$3.45 domestic or \$6.00 international postage) each. PayPal to [peter@pcelias.com](mailto:peter@pcelias.com) are accepted. Peter Elias, PO Box 940427, Plano, TX 75094 6/16

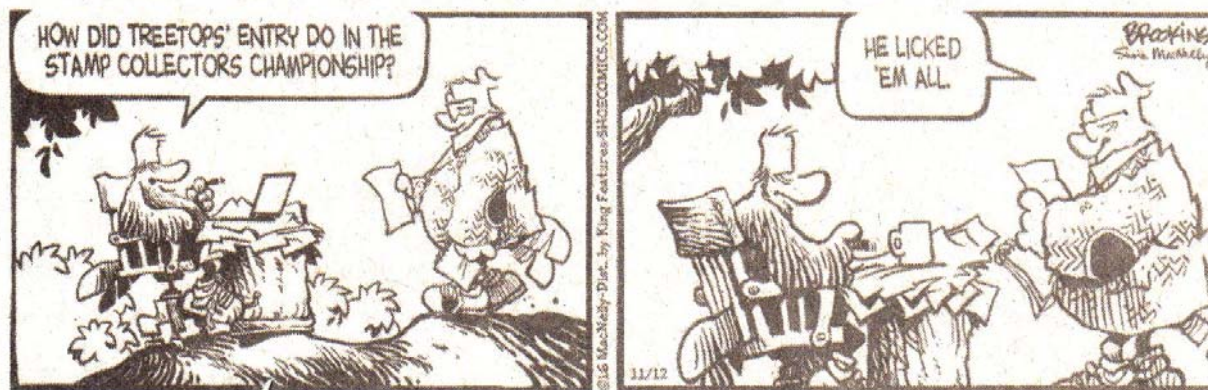
**MOVED, BUT SALE CONTINUES!** Special discounts to MCSC members for Swiss, Austria, Liechtenstein issues, @ 1/3 and LESS of catalog values. Also will accept US postage (any values) @ 50% of catalog. All orders postpaid! I also accept PayPal if you wish! John Barrett, Ph.D. Contact info: [jstrubel-boy@aol.com](mailto:jstrubel-boy@aol.com) 12/14

**Canadian Collection housed in Scott Specialty Single Country Album.** Starts with Scott#18 through 1970. Mostly mint, some used. 2013 Scott catalog value is \$4,100, asking \$875 OBO. Will accept US postage at face value as part payment. Contact Dave Linn, (903) 785-7864 or [dkgonefishing@yahoo.com](mailto:dkgonefishing@yahoo.com) 8/19

## Comic Strip - Shoe (Stamp Collectors Championship)

By Peter Elias

SHOE by Chris Cassatt, Gary Brookins & Susie MacNelly



I suppose that the point of this "Shoe" comic strip (provided by Alliene Franklin) is to be a play on words.

This strip came out in 2016 (if I can interpret the copyright year properly), so

the reference to "licking" stamps is a bit dated, since there haven't been any traditional lick-n-stick stamps in quite a while! The creators obviously don't know much about stamp collecting either by their reference to a "Stamp Collector's Championship"!



## MEET & EAT for December 2019 & January 2020

by Judy & Stanley Christmas

"Meet & Eats" are held before our club meetings. All club members and their guests are welcome. We will gather at 5:00 PM start ordering at that time. However, latecomers can order when they arrive or just come by for a visit. Meals should be over around 6:15 PM to 6:30 PM with the Arlington new meeting start time now being at 7:00 PM rather than 7:30 PM.

Meet & Eat locations will be included the club's broadcast messages. NOTE: All locations are subject to change.

### ARLINGTON

January 8 Angelo's Pizza, 2590 W. Pioneer, Pantego  
February 5 Spring Creek BBQ, 3608 S. Cooper St.

### EULESS

January 15 On The Border, 2500 Airport Fwy, Bedford  
February 19 Chili's, 2101 Airport Fwy, Bedford

### GRANBURY

January 28 To-Be-Determined  
February 25 To-Be-Determined

## Wanted to Buy

**Texas Precancel Stamps.** Contact Rick Howell at  
[Rick.howell1@tx.rr.com](mailto:Rick.howell1@tx.rr.com)

5/19

Wanted to buy or trade for: **Worldwide unusual EFOs, postal counterfeits**, Odd US 20th century auxiliary markings, US 1934 and 1935 Christmas Seals on and off cover and publicity material, Korean War postal history from US and other UN contingents, and any other US philatelic material with an interesting story. John Hotchner, PO Box 1125, Falls Church, VA 22041, or  
[imhstamp@verizon.net](mailto:imhstamp@verizon.net) 2 /15

## For Sale

I have over **10,000 auctions** on delcampe.com @ 35% of Scott or less. Worldwide & US stamps, covers and FDCs. For more info contact Denny Ludlow @ (713) 898-1872 10/15

**FREE 111-page or 26-page album** of Spanish ATM stamps (provided as a PDF file) with purchase of at least \$3.00 in Spanish ATM stamps! Contact Peter Elias at  
[peter@pcelias.com](mailto:peter@pcelias.com) 6/17

Mid-Cities Stamp Club "Stamping Around" Newsletter  
c/o Peter Elias  
PO Box 940427  
Plano, TX 75094-0427

**Don't Forget:**  
**Arlington January 1 Meeting has been  
moved to January 8!**  
**2020 EXPO Planning Mtg - January 18**